

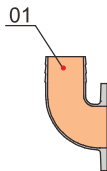
7.5-10HP 4P
60Hz:1750rpm

Specification

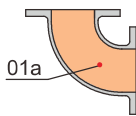
- Insulation class : F
- Protection class : IP68
- Water temperature : up to 40°C
- PH : 6 to 10
- Density of liquid : 1.3g/cm³
- Power supply : three phase 230/460V±10%, 60Hz
- Motor protection : built in
- Capacity : up to 400m³/h
- Head : up to 24m
- Maximum immersion depth : 20m
- Cable length : 8m



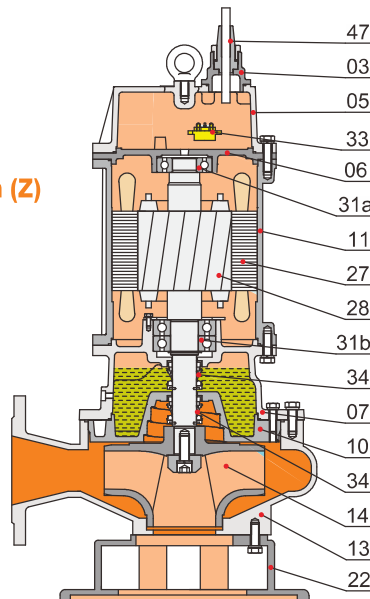
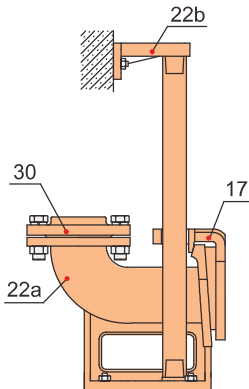
Movable Soft Pipe Installation (R)



Movable Hard Pipe Installation(Y)



Auto-coupled Installation (Z)

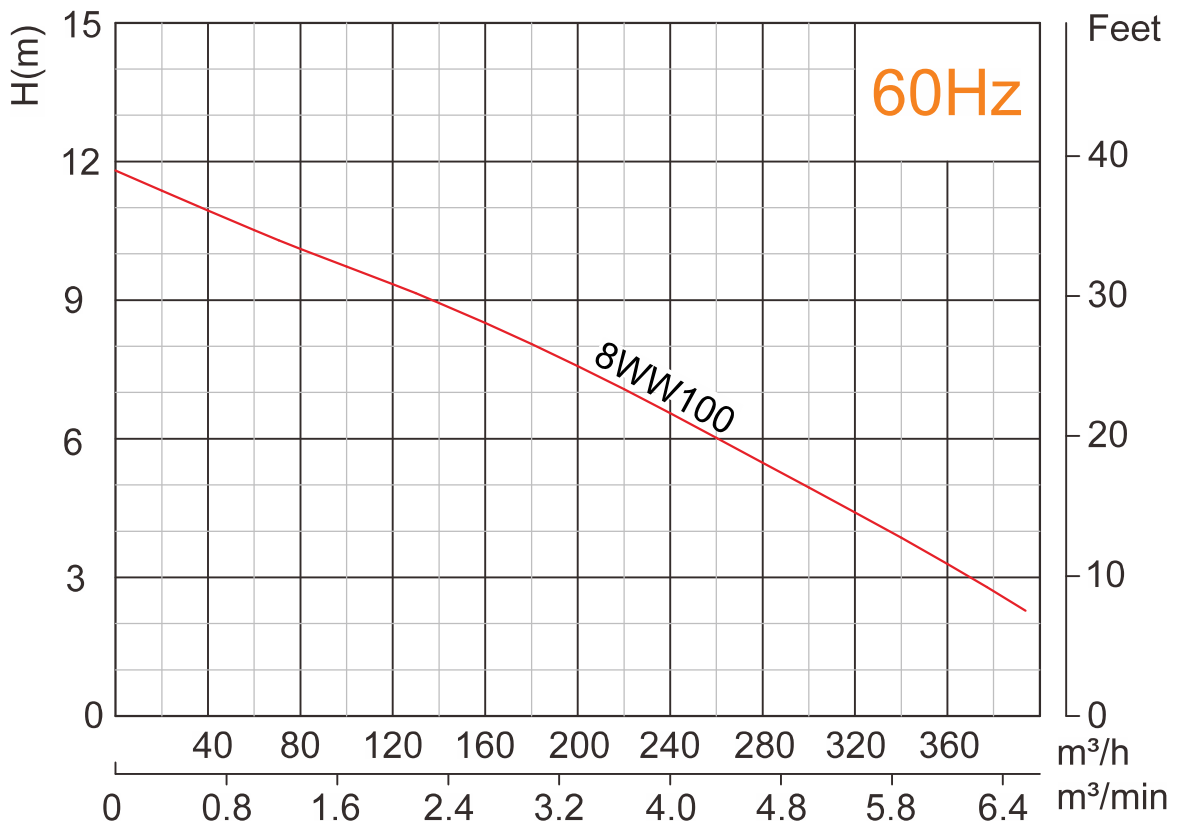


Materials of construction

Item No.	Part name	Material
01	Hose coupling	Cast iron
01a	Hose coupling	Cast iron
03	Terminal box	Cast iron
05	Upper cover	Cast iron
06	Up-Bearing house	Cast iron
07	Bearing house	Cast iron
10	Seal bracket	Cast iron
11	Motor body	Cast iron
13	Pump body	Cast iron
14	Impeller	Ductile iron
17	Coupling adapter	Cast iron
22	Seat assembly	Cast iron
22a	Coupling seat	Cast iron
22b	Upper guide support	Cast iron
27	Stator	
28	Rotor	Shaft : AISI304SS
30	Flange	Cast iron
31a	Bearing	Ball bearing
31b	Bearing	Ball bearing
33	Motor protector	
34	Mechanical seal	Sic-Sic
47	Cable	

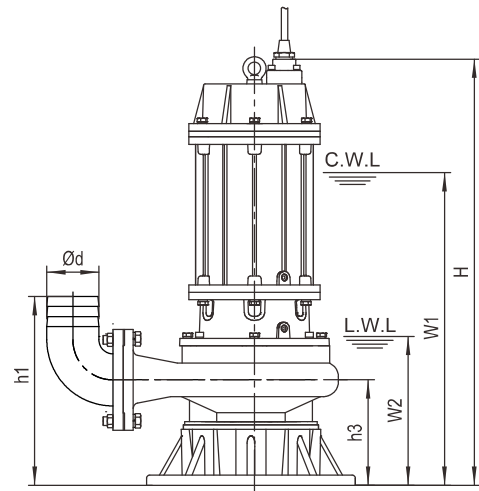
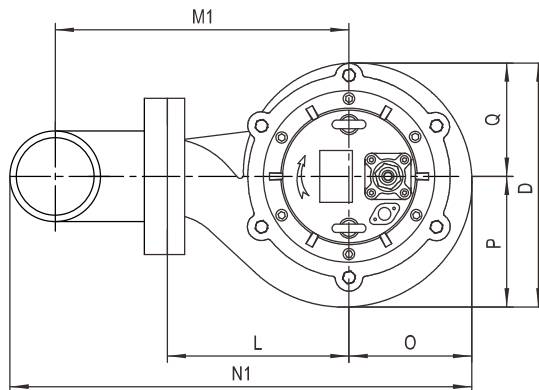


8WW100

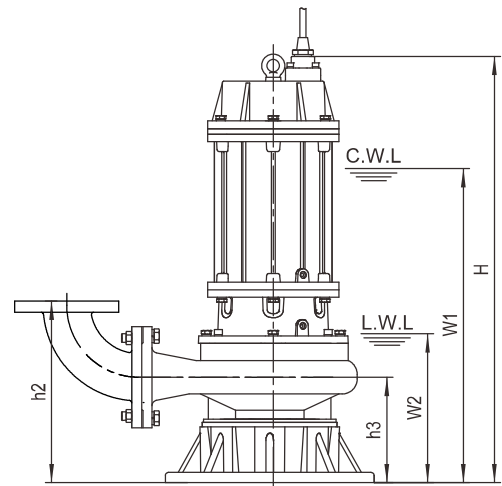
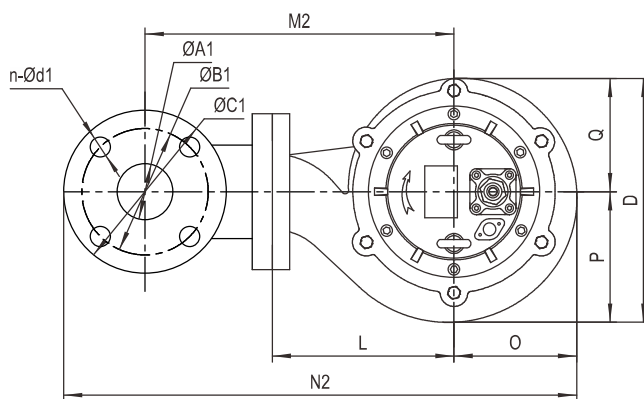


Model	Voltage	Current	Motor power		Outlet		Rated capacity	Rated head	Max capacity	Max Head	Impeller Passage	Cable
	V	A	kW	HP	in	mm	m³/h	m	m³/h	m	mm	mm²
8WW100	230/460	25.6/12.8	7.5	10	8	200	250	6	400	12	75	4G4.0

Movable Soft Pipe Installation (R)



Movable Hard Pipe Installation (Y)



C.W.L : Continuous running water level
L.W.L : Lowest running water level

Dimensions table

Model	Ød	ØA1	ØB1	ØC1	n-Ød1	h1	h2	h3	W1	W2	H	O	P	Q	L	D	M1	M2	N1	N2
8WW100	8"	200	295	340	8-Ø22	540	460	230	695	320	915	230	255	192	350	447	552	582	882	982

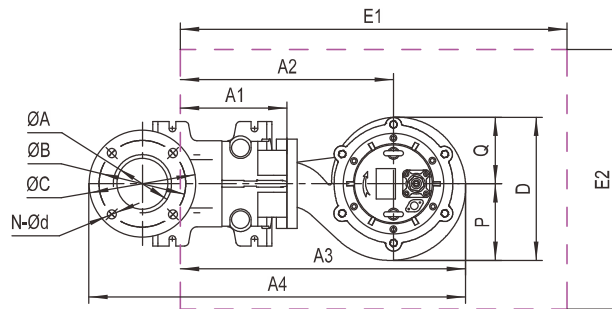
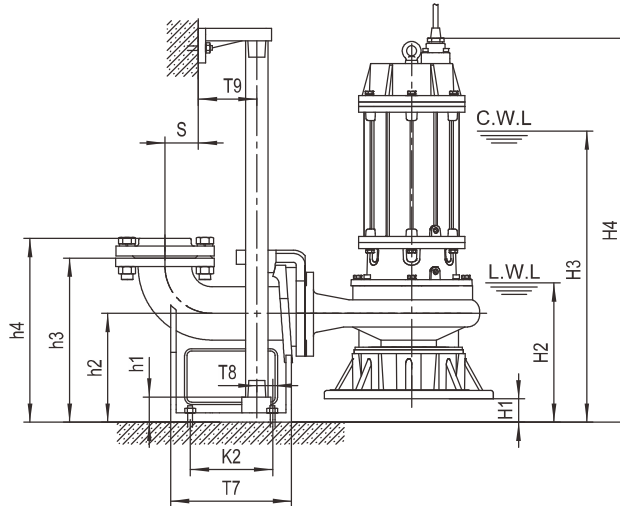
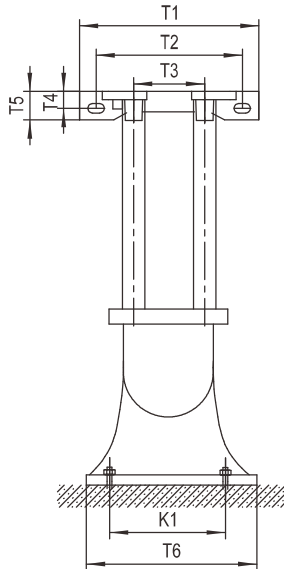
Weights & Packing dimensions

Model	R			Y		
	N.W	G.W	Packing dimension	N.W	G.W	Packing dimension
	kg	kg	mm	kg	kg	mm
8WW100	203	218	730×490×1090	211	226	730×490×1090



8WW100

Auto-Coupled Installation (Z)



C.W.L : Continuous running water level
 L.W.L : Lowest running water level

The coupling and pump will be packed individually, packing dimension and weight in table only refer to the pump, please refer to P48 to check coupling's packing dimension and weight.

Dimensions table

Auto coupling	ØA	ØB	ØC	N-Ød	T1	T2	T3	T4	T5	T6	T7	T8	T9	K1	K2	S	h1	h2	h3	h4
8AC1	8"	295	340	8-Ø22	400	260	280	24	48	400	445	100	95	300	355	230	440	325	555	—

Dimensions table

Model	Auto coupling	H1	H2	H3	H4	A1	A2	A3	A4	P	Q	D	E1×E2	Pump weight & packing dimension		
														N.W	G.W	Packing dimension
8WW100	8"	95	415	790	1010	285	635	865	1263	255	192	447	1050×650	178	193	730×490×1090