

1-2HP 2P

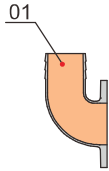
60Hz : 3450rpm

Specification

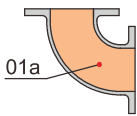
- Insulation class : B
- Protection class : IP68
- Water temperature : up to 40°C
- PH : 6 to 10
- Density of liquid : 1.3g/cm³
- Power supply : single phase 220V ±10%, 60Hz
- Motor protection : built in
- Capacity : up to 37m³/h
- Head : up to 21m
- Maximum immersion depth : 10m
- Cable length : 8m



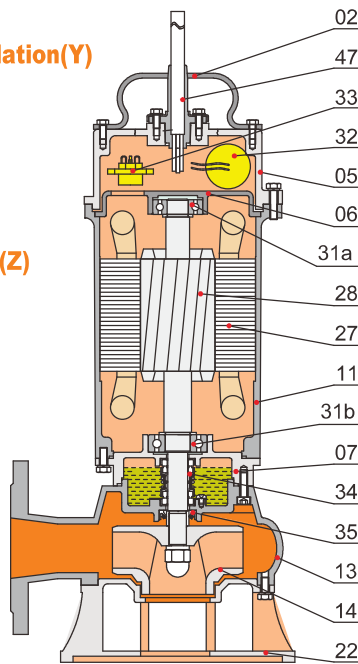
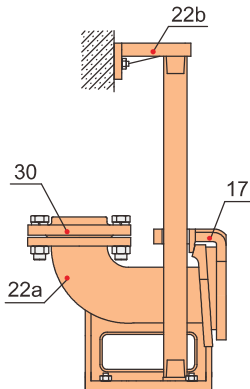
Movable Soft Pipe Installation (R)



Movable Hard Pipe Installation (Y)



Auto-coupled Installation (Z)



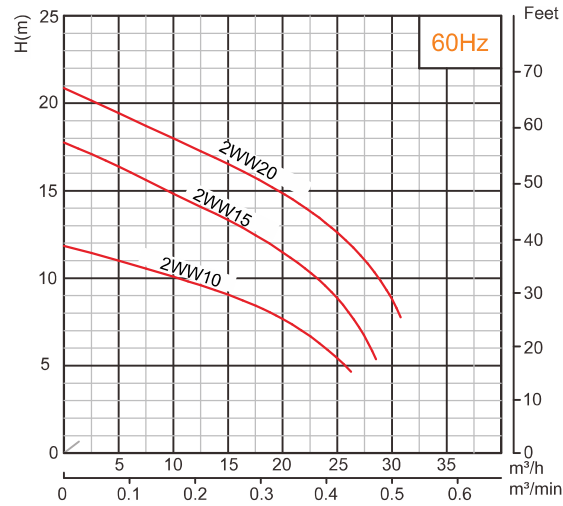
Materials of construction

Item No.	Part name	Material
01	Hose coupling	Cast iron
01a	Hose coupling	Cast iron
02	Handle	Steel
05	Upper cover	Cast iron
06	Up-Bearing house	Cast iron
07	Bearing house	Cast iron
11	Motor body	Cast iron
13	Pump body	Cast iron
14	Impeller	Cast iron
17	Coupling adapter	Cast iron
22	Seat assembly	Cast iron
22a	Coupling seat	Cast iron
22b	Upper guide support	Cast iron
27	Stator	
28	Rotor	Shaft : AISI304SS
30	Flange	Cast iron
31a	Bearing	Ball bearing
31b	Bearing	Ball bearing
32	Capacitor	(Single phase only)
33	Motor protector	
34	Mechanical seal	SiC-Ceramic/Carbon-Ceramic
35	Oil seal	
47	Cable	



WW SERIES SEWAGE PUMP

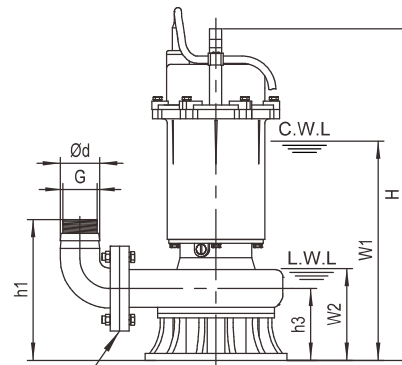
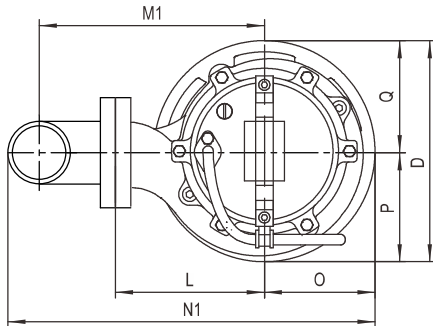
2WW10
2WW15
2WW20



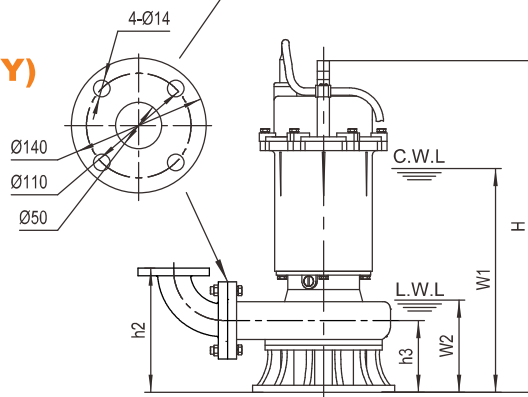
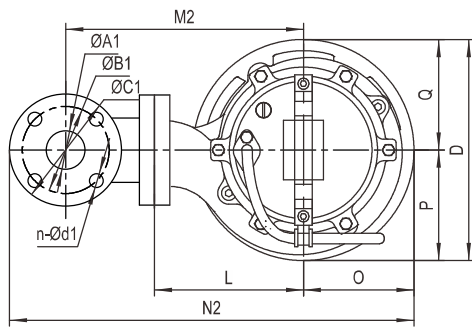
Model 60Hz	Current			Motor power HP	Outlet		Rated capacity m³/h	Rated head m	Max capacity m³/h	Max Head m	Impeller Passage mm	Cable mm²
	115V,1PH	230V,1PH	230/460V		in	mm						
2WW10	9.5A	5.8A	3.4/1.7A	1	2	50	10	10	26	12	25	3G1.0
2WW15		6.8A	4.8/2.4A	1.5	2	50	8	15	29	18	20	3G1.0
2WW20		9.5A	6.0/3.0A	2	2	50	8	19	33	21	20	3G1.5

**2WW10
2WW15
2WW20**

Movable Soft Pipe Installation (R)



Movable Hard Pipe Installation (Y)



C.W.L : Continuous running water level
L.W.L : Lowest running water level

Dimensions table

Model	Ød	G	ØA1	ØB1	ØC1	n-Ød1	h1	h2	h3	W1	W2	H	O	P	Q	L	D	M1	M2	N1	N2
2WW10	2"	1½"	50	110	140	4-Ø14	200	195	95	315	120	450	94	96	94	130	190	195	225	315	388
2WW15	2"	1½"	50	110	140	4-Ø14	195	190	90	345	120	480	94	98	94	135	192	200	230	320	395
2WW20	2"	1½"	50	110	140	4-Ø14	195	190	90	360	120	495	94	98	94	135	192	200	230	320	395

Weights & Packing dimensions

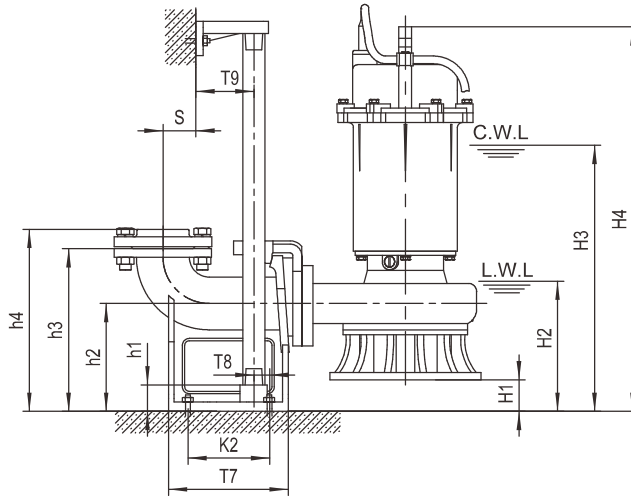
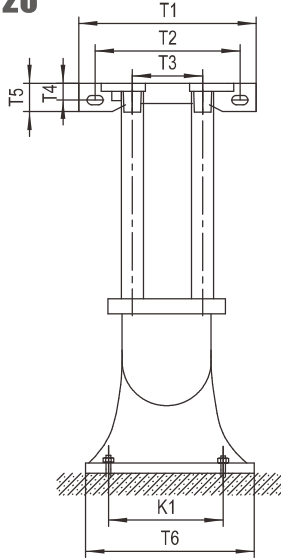
Model	R			Y		
	N.W	G.W	Packing dimension	N.W	G.W	Packing dimension
	kg	kg	mm	kg	kg	mm
2WW10	23	24.5	490×225×240	25	26.5	490×225×250
2WW15	25.5	27	515×225×240	26.5	29	515×225×250
2WW20	29	30.5	520×225×240	31	32.5	520×225×250



WW SERIES SEWAGE PUMP

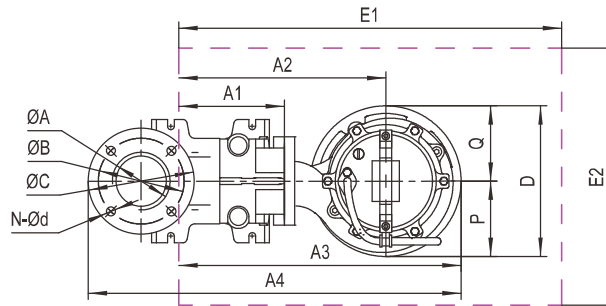
2WW10
2WW15
2WW20

Auto-Coupled Installation (Z)



C.W.L : Continuous running water level
L.W.L : Lowest running water level

The coupling and pump will be packed individually, packing dimension and weight in table only refer to the pump, please refer to P48 to check coupling's packing dimension and weight.



Dimensions table

Auto coupling	ØA	ØB	ØC	N-Ød	T1	T2	T3	T4	T5	T6	T7	T8	T9	K1	K2	S	h1	h2	h3	h4
2AC1	2"	110	140	4-Ø14	265	215	105	25	42	200	215	15	67	165	135	63	25	160	250	280

Dimensions table

Model	Auto coupling	H1	H2	H3	H4	A1	A2	A3	A4	P	Q	D	E1×E2	Pump weight & packing dimension		
														N.W	G.W	Packing dimension
2WW10	2"	65	185	380	515	155	285	378	510	96	94	190	650×550	21	22.5	490×225×240
2WW15	2"	70	190	415	550	155	290	383	515	98	94	192	650×550	23.5	25	515×225×240
2WW20	2"	70	190	430	565	155	290	383	515	98	94	192	650×550	27	28.5	520×225×240