



**PERFORMANCE CURVES
60HZ**

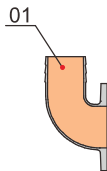
WASTE WATER PUMPS

40-60HP 4P
60Hz:1750rpm

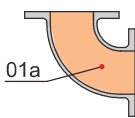
Specification

- Insulation class : F
- Protection class : IP68
- Starting method : reduced-voltage starting
- Water temperature : up to 40°C
- PH : 6 to 10
- Density of liquid : 1.3g/cm³
- Power supply : three phase 230/460V±10%, 60Hz
- Capacity : up to 1200m³/h
- Head : up to 48m
- Maximum immersion depth : 20m
- Cable length : 8m

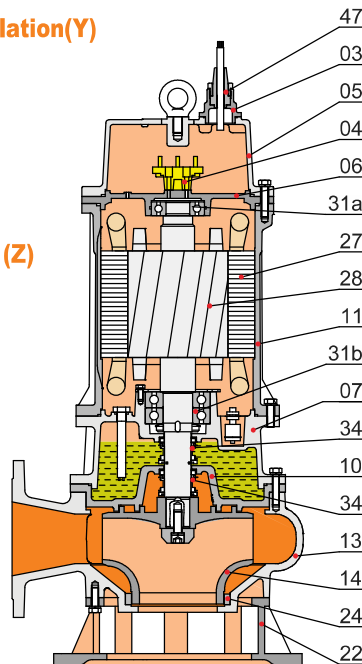
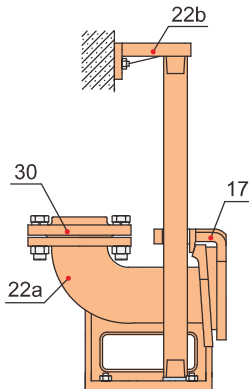
Movable Soft Pipe Installation (R)



Movable Hard Pipe Installation(Y)



Auto-coupled Installation (Z)



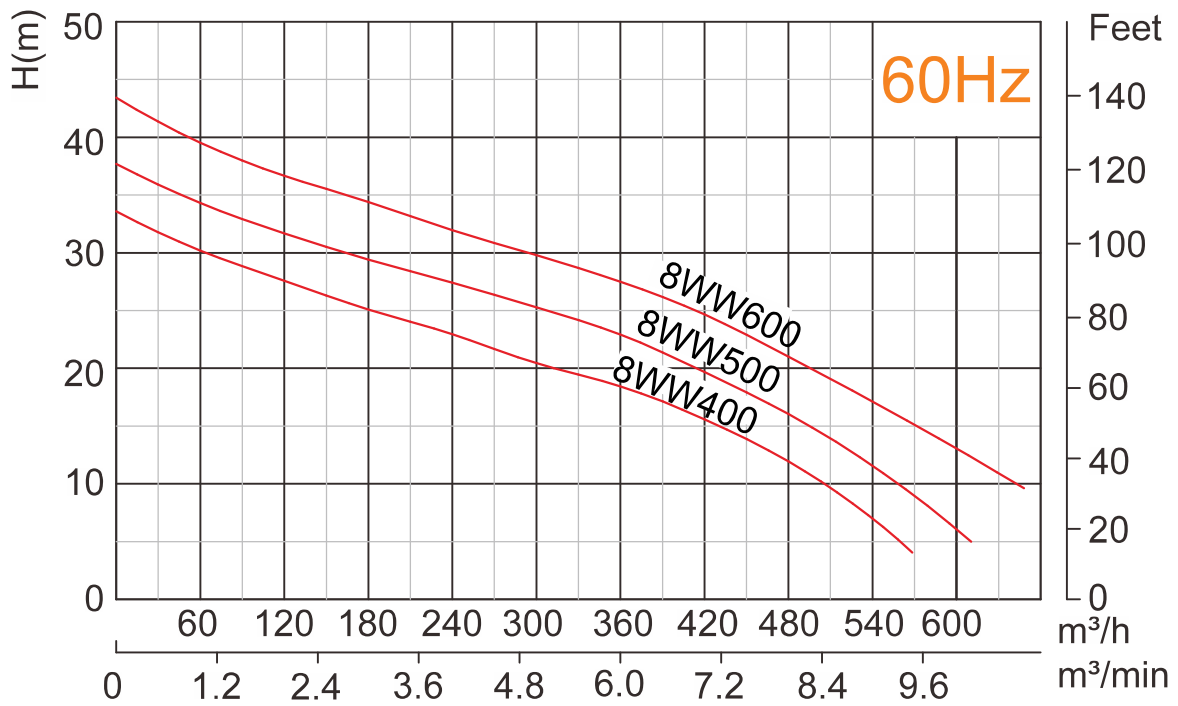
Materials of construction

Item No.	Part name	Material
01	Hose coupling	Cast iron
01a	Hose coupling	Cast iron
03	Terminal box	Cast iron
04	Wiring terminal	
05	Upper cover	Cast iron
06	Up-Bearing house	Cast iron
07	Bearing house	Cast iron
10	Seal bracket	Cast iron
11	Motor body	Cast iron
13	Pump body	Cast iron
14	Impeller	Ductile iron
17	Coupling adapter	Cast iron
22	Seat assembly	Cast iron
22a	Coupling seat	Cast iron
22b	Upper guide support	Cast iron
24	Neck ring	High chrome alloy
27	Stator	
28	Rotor	Shaft : AISI420SS
30	Flange	Cast iron
31a	Bearing	Ball bearing
31b	Bearing	Ball bearing
34	Mechanical seal	Sic-Sic
47	Cable	



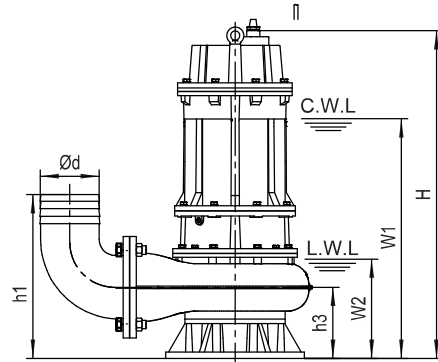
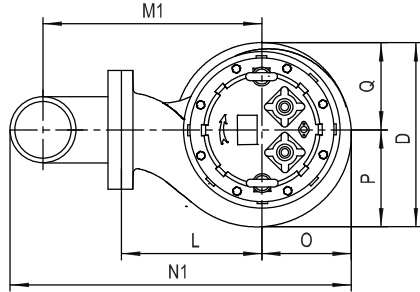
WW SERIES SEWAGE PUMP

8WW400
8WW500
8WW600



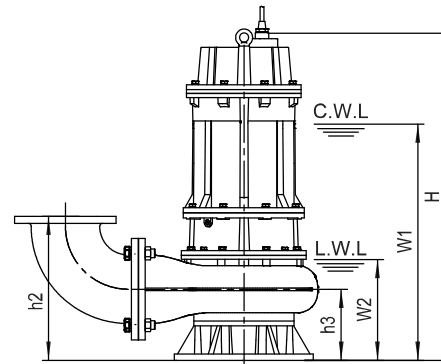
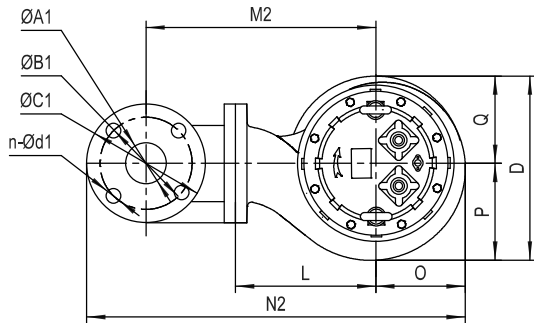
Model	Voltage	Current	Motor power		Outlet		Rated capacity	Rated head	Max capacity	Max Head	Impeller Passage
	50Hz/60Hz	V	A	kW	HP	in	mm	m³/h	m	m³/h	m
8WW400	230/460	98/49	30	40	8	200	300	21	580	34	80
8WW500	230/460	118/59	37	50	8	200	300	25	620	38	80
8WW600	230/460	143/71.5	45	60	8	200	300	30	660	43	80

Movable Soft Pipe Installation (R)



8WW400
8WW500
8WW600

Movable Hard Pipe Installation(Y)



C.W.L : Continuous running water level
L.W.L : Lowest running water level

Dimensions table

Model	Ød	ØA1	ØB1	ØC1	n-Ød1	h1	h2	h3	W1	W2	H	O	P	Q	L	D	M1	M2	N1	N2
8WW400		200	295	340	8-Ø22	580	500	270	895	380	1240	286	308	270	390	578	592	622	978	1078
8WW500	8"	200	295	340	8-Ø22	580	500	270	890	380	1295	286	308	270	390	578	592	622	978	1078
8WW600	8"	200	295	340	8-Ø22	580	500	270	930	380	1295	286	308	270	390	578	592	622	978	1078

※Standard equipment of 250, 300 mm outlet dimension does not include the bend hose coupling

Weights & Packing dimensions

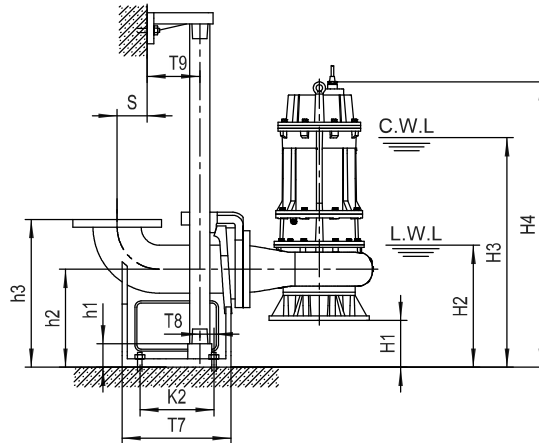
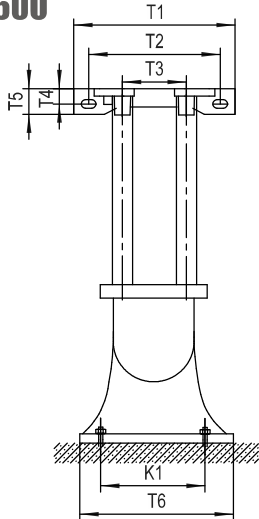
Model	R			Y		
	N.W	G.W	Packing dimension	N.W	G.W	Packing dimension
	kg	kg	mm	kg	kg	mm
8WW400	527	549	810×610×1420	535	557	810×610×1420
8WW500	584	606	810×610×1450	592	614	810×610×1450
8WW600	612	634	810×610×1450	620	642	810×610×1450



WW SERIES SEWAGE PUMP

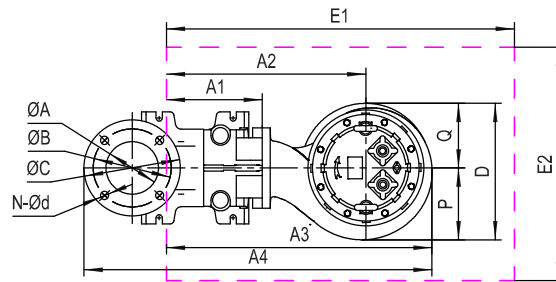
8WW400
8WW500
8WW600

Auto-Coupled Installation (Z)



C.W.L : Continuous running water level
L.W.L : Lowest running water level

The coupling and pump will be packed individually, packing dimension and weight in table only refer to the pump, please refer to P48 to check coupling's packing dimension and weight.



Dimensions table

Auto coupling	ØA	ØB	ØC	N-Ød	T1	T2	T3	T4	T5	T6	T7	T8	T9	K1	K2	S	h1	h2	h3
8AC1	8"	295	340	8-Ø22	400	260	280	24	48	400	445	100	95	300	355	230	440	325	555

Dimensions table

Model	Auto coupling	H1	H2	H3	H4	A1	A2	A3	A4	P	Q	D	E1×E2	Pump weight & packing dimension		
														N.W	G.W	Packing dimension
8WW400	8"	55	435	950	1295	285	675	960	1360	308	270	578	1150×800	502	514	810×610×1420
8WW500	8"	55	435	945	1350	285	675	960	1360	308	270	578	1150×800	559	581	810×610×1450
8WW600	8"	55	435	985	1350	285	675	960	1360	308	270	578	1150×800	587	609	810×610×1450