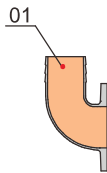


15-30HP 4P
60Hz:1750rpm

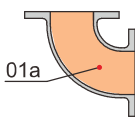
Specification

- Insulation class : F
- Protection class : IP68
- Starting method : reduced-voltage starting
- Water temperature : up to 40°C
- PH : 6 to 10
- Density of liquid : 1.3g/cm³
- Power supply : three phase 230/460V±10%, 60Hz
- Capacity : up to 860m³/h
- Head : up to 44m
- Maximum immersion depth : 20m
- Cable length : 8m

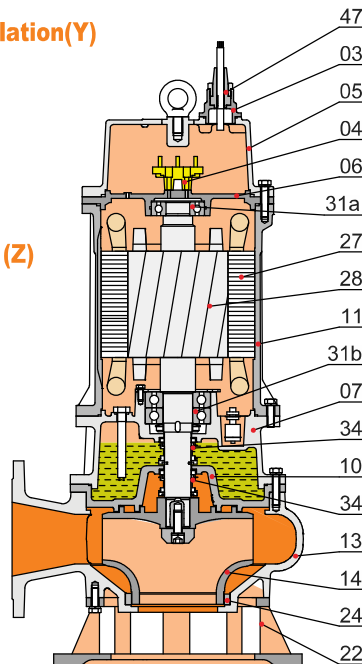
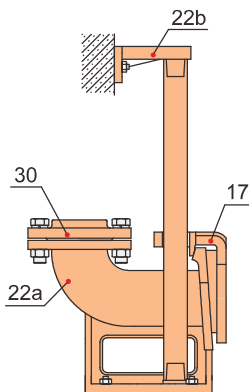
Movable Soft Pipe Installation (R)



Movable Hard Pipe Installation(Y)



Auto-coupled Installation (Z)

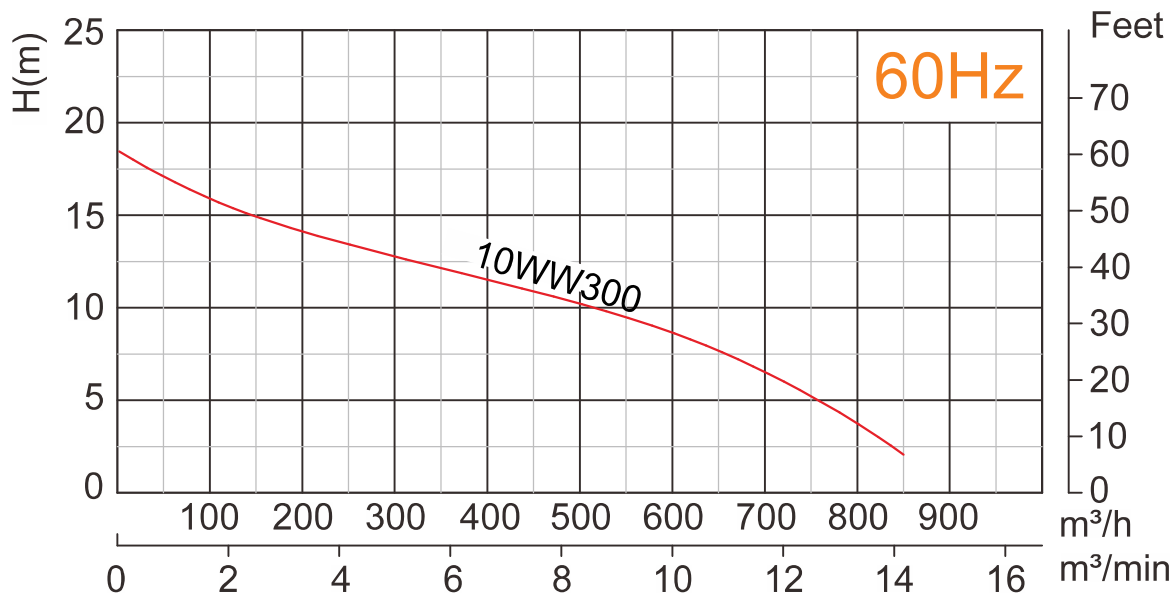


Materials of construction

Item No.	Part name	Material
01	Hose coupling	Cast iron
01a	Hose coupling	Cast iron
03	Terminal box	Cast iron
04	Wiring terminal	
05	Upper cover	Cast iron
06	Up-Bearing house	Cast iron
07	Bearing house	Cast iron
10	Seal bracket	Cast iron
11	Motor body	Cast iron
13	Pump body	Cast iron
14	Impeller	Ductile iron
17	Coupling adapter	Cast iron
22	Seat assembly	Cast iron
22a	Coupling seat	Cast iron
22b	Upper guide support	Cast iron
24	Neck ring	High chrome alloy
27	Stator	
28	Rotor	Shaft : AISI420SS
30	Flange	Cast iron
31a	Bearing	Ball bearing
31b	Bearing	Ball bearing
34	Mechanical seal	Sic-Sic
47	Cable	

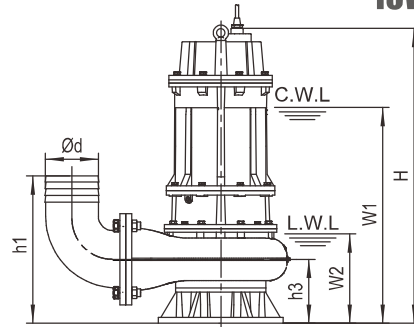
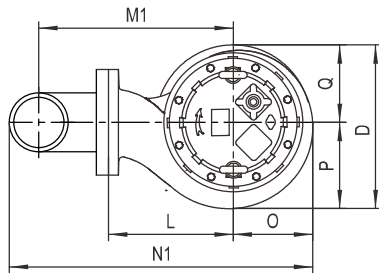


10WW300

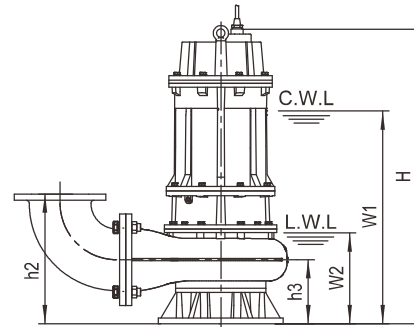
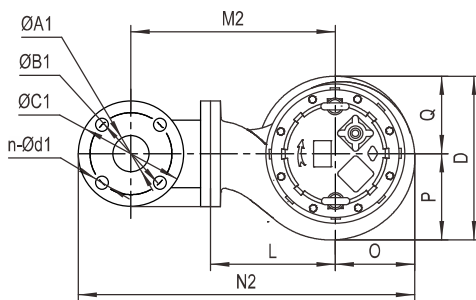


Model	Voltage		Current		Motor power		Outlet		Rated capacity	Rated head	Max capacity	Max Head	Impeller Passage	Cable
	V	A	kW	HP	in	mm	m³/h	m						
10WW300	230/460	73/36.5	22	30	10	250	500	11	860	19	70	4G10.0		

Movable Soft Pipe Installation (R)



Movable Hard Pipe Installation (Y)



C.W.L : Continuous running water level
L.W.L : Lowest running water level

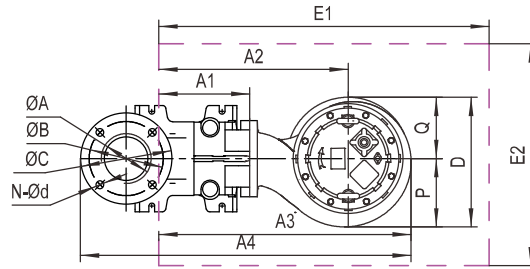
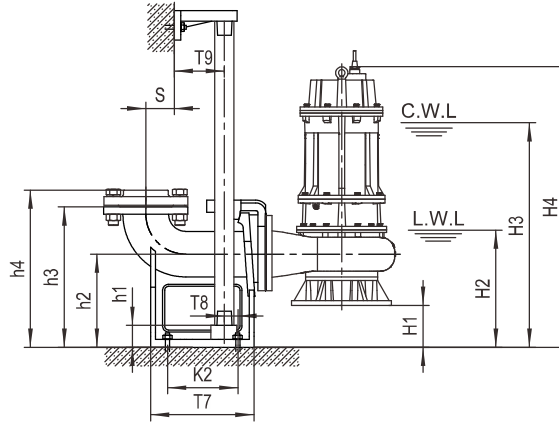
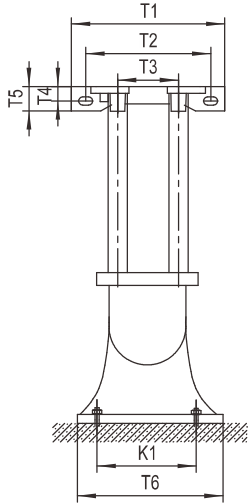
Dimensions table

Model	Ød	ØA1	ØB1	ØC1	n-Ød1	h1	h2	h3	W1	W2	H	O	P	Q	L	D	M1	M2	N1	N2
10WW300	10"	250	350	395	12-Ø22	635	545	275	860	400	1160	280	313	270	400	583	638	673	1043	1150

※Standard equipment of 250 mm outlet dimension does not include the bend hose coupling.

Weights & Packing dimensions

Model	R			Y		
	N.W	G.W	Packing dimension	N.W	G.W	Packing dimension
	kg	kg	mm	kg	kg	mm
10WW300	390	411	720×600×1300	400	421	720×600×1300

10WW300
Auto-Coupled Installation (Z)


C.W.L : Continuous running water level
L.W.L : Lowest running water level

The coupling and pump will be packed individually, packing dimension and weight in table only refer to the pump, please refer to P48 to check coupling's packing dimension and weight.

Dimensions table

Auto coupling	ØA	ØB	ØC	N-Ød	T1	T2	T3	T4	T5	T6	T7	T8	T9	K1	K2	S	h1	h2	h3	h4
10AC1	10"	350	395	12-Ø22	400	260	280	24	48	460	555	110	95	360	430	295	460	315	630	—

※Standard equipment of 150 mm outlet dimension does not include flange.

Dimensions table

Model	Auto coupling	H1	H2	H3	H4	A1	A2	A3	A4	P	Q	D	E1×E2	Pump weight & packing dimension		
														N.W	G.W	Packing dimension
10WW300	10"	40	400	860	1160	310	710	990	1482	313	270	583	1100×850	360	381	720×600×1300