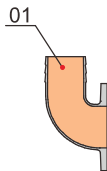


40-60HP 4P
60Hz:1750rpm

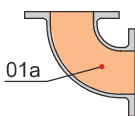
Specification

- Insulation class : F
- Protection class : IP68
- Starting method : reduced-voltage starting
- Water temperature : up to 40°C
- PH : 6 to 10
- Density of liquid : 1.3g/cm³
- Power supply : three phase 230/460V±10%, 60Hz
- Capacity : up to 1200m³/h
- Head : up to 48m
- Maximum immersion depth : 20m
- Cable length : 8m

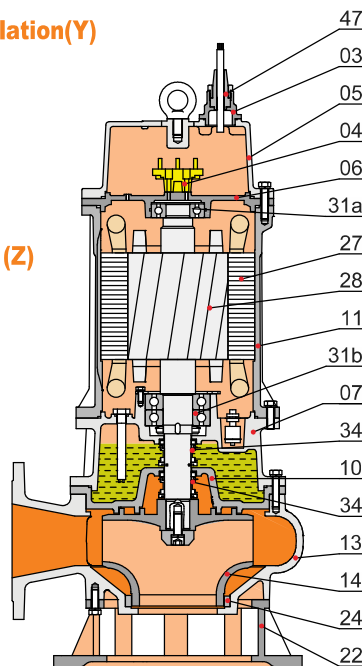
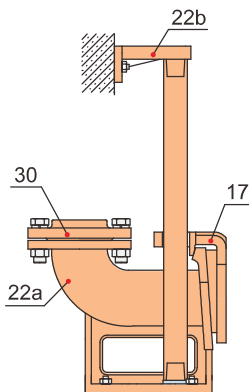
Movable Soft Pipe Installation (R)



Movable Hard Pipe Installation(Y)



Auto-coupled Installation (Z)



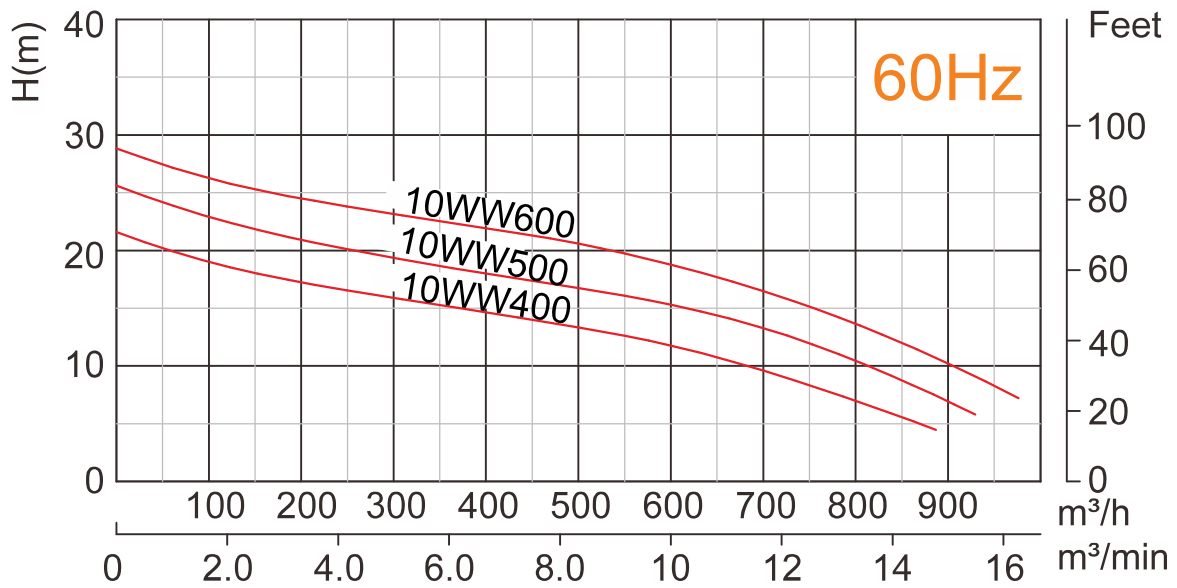
Materials of construction

Item No.	Part name	Material
01	Hose coupling	Cast iron
01a	Hose coupling	Cast iron
03	Terminal box	Cast iron
04	Wiring terminal	
05	Upper cover	Cast iron
06	Up-Bearing house	Cast iron
07	Bearing house	Cast iron
10	Seal bracket	Cast iron
11	Motor body	Cast iron
13	Pump body	Cast iron
14	Impeller	Ductile iron
17	Coupling adapter	Cast iron
22	Seat assembly	Cast iron
22a	Coupling seat	Cast iron
22b	Upper guide support	Cast iron
24	Neck ring	High chrome alloy
27	Stator	
28	Rotor	Shaft : AISI420SS
30	Flange	Cast iron
31a	Bearing	Ball bearing
31b	Bearing	Ball bearing
34	Mechanical seal	Sic-Sic
47	Cable	



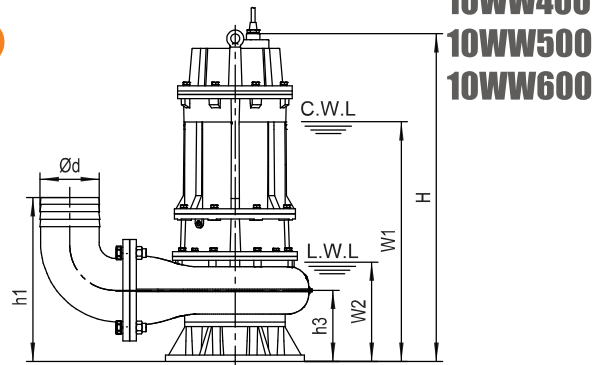
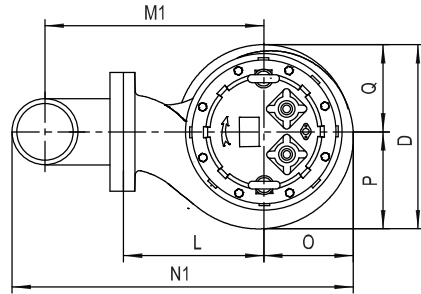
WW SERIES SEWAGE PUMP

10WW400
10WW500
10WW600



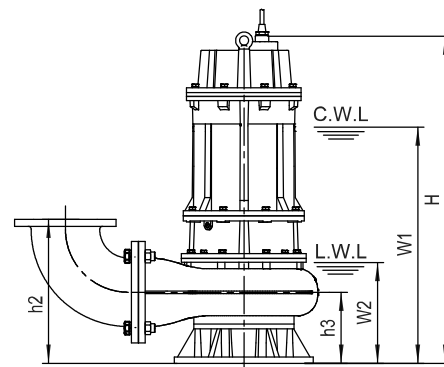
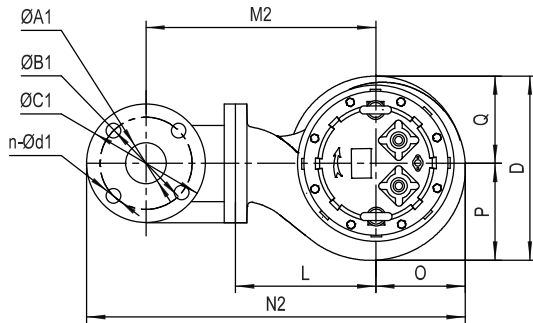
Model	Voltage	Current	Motor power		Outlet		Rated capacity	Rated head	Max capacity	Max Head	Impeller Passage
	V	A	kW	HP	in	mm	m³/h	m	m³/h	m	mm
10WW400	230/460	98/49	30	40	10	250	500	14	900	22	85
10WW500	230/460	118/59	37	50	10	250	500	18	950	26	85
10WW600	230/460	143/71.5	45	60	10	250	500	21	1000	29	85

Movable Soft Pipe Installation (R)



10WW400
10WW500
10WW600

Movable Hard Pipe Installation (Y)



C.W.L : Continuous running water level
L.W.L : Lowest running water level

Dimensions table

Model	Ød	ØA1	ØB1	ØC1	n-Ød1	h1	h2	h3	W1	W2	H	O	P	Q	L	D	M1	M2	N1	N2
10WW400		250	350	395	12-Ø22	—	545	275	920	400	1265	300	332	270	410	602	—	683	—	1181
10WW500	10"	250	350	395	12-Ø22	—	545	275	910	400	1315	300	332	270	410	602	—	683	—	1181
10WW600	10"	250	350	395	12-Ø22	—	545	275	950	400	1315	300	332	270	410	602	—	683	—	1181

※Standard equipment of 250, 300 mm outlet dimension does not include the bend hose coupling

Weights & Packing dimensions

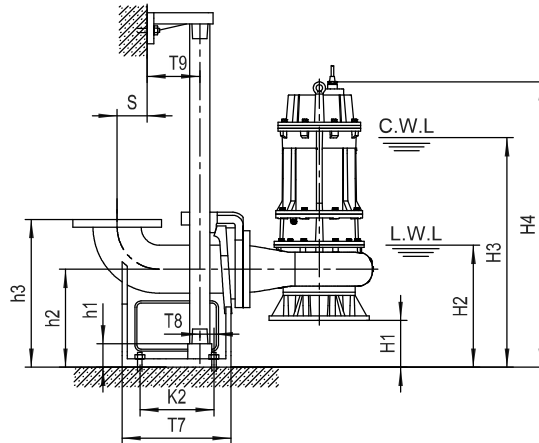
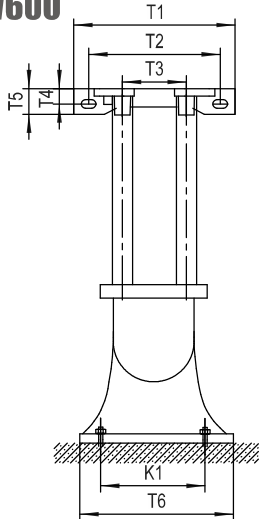
Model	R			Y		
	N.W	G.W	Packing dimension	N.W	G.W	Packing dimension
	kg	kg	mm	kg	kg	mm
10WW400	520	543	750×640×1440	567	590	750×640×1440
10WW500	578	601	750×640×1470	625	648	750×640×1470
10WW600	606	629	750×640×1470	653	676	750×640×1470



WW SERIES SEWAGE PUMP

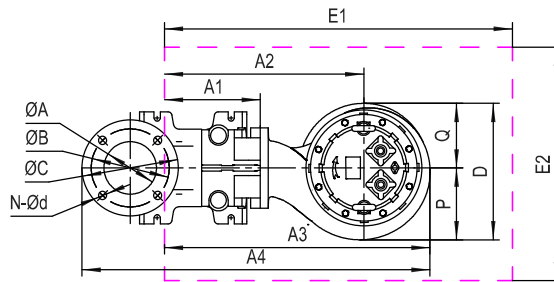
10WW400
10WW500
10WW600

Auto-Coupled Installation (Z)



C.W.L : Continuous running water level
L.W.L : Lowest running water level

The coupling and pump will be packed individually, packing dimension and weight in table only refer to the pump, please refer to P48 to check coupling's packing dimension and weight.



Dimensions table

Auto coupling	ØA	ØB	ØC	N-Ød	T1	T2	T3	T4	T5	T6	T7	T8	T9	K1	K2	S	h1	h2	h3
10AC1	10"	350	395	12-Ø22	400	260	280	24	48	460	555	110	95	360	430	295	460	315	630

Dimensions table

Model	Auto coupling	H1	H2	H3	H4	A1	A2	A3	A4	P	Q	D	E1×E2	Pump weight & packing dimension		
														N.W	G.W	Packing dimension
10WW400	10"	40	440	960	1305	310	720	1020	1510	332	270	602	1250×800	520	543	750×640×1440
10WW500	10"	40	440	950	1355	310	720	1020	1510	332	270	602	1250×800	578	601	750×640×1470
10WW600	10"	40	440	990	1355	310	720	1020	1510	332	270	602	1250×800	606	629	750×640×1470