

40-60HP 4P
60Hz:1750rpm

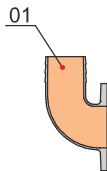
12WW400
12WW500
12WW600

Specification

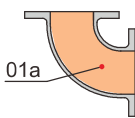
- Insulation class : F
- Protection class : IP68
- Starting method : reduced-voltage starting
- Water temperature : up to 40°C
- PH : 6 to 10
- Density of liquid : 1.3g/cm³
- Power supply : three phase 230/460V±10%, 60Hz
- Capacity : up to 1200m³/h
- Head : up to 48m
- Maximum immersion depth : 20m
- Cable length : 8m



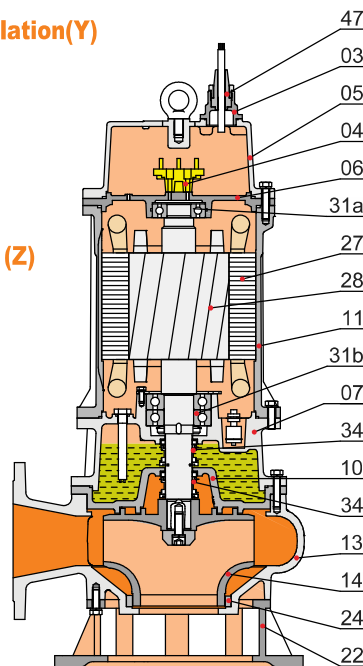
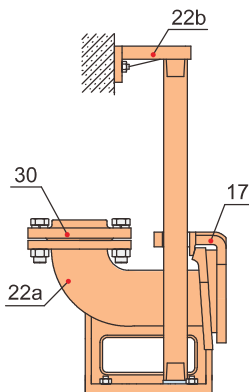
Movable Soft Pipe Installation (R)



Movable Hard Pipe Installation(Y)



Auto-coupled Installation (Z)



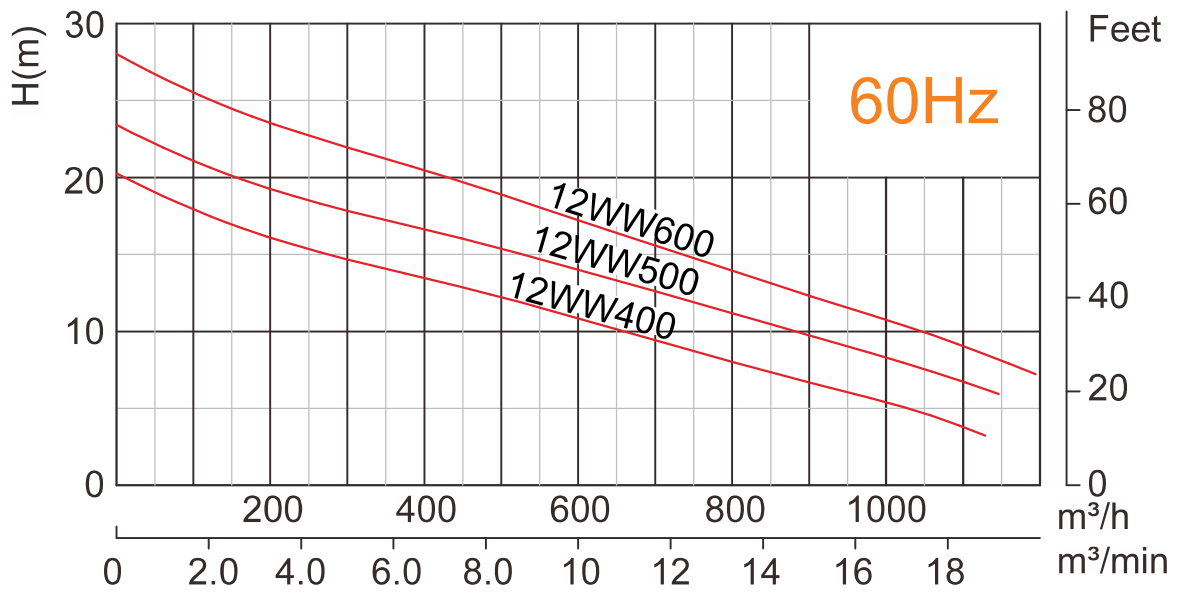
Materials of construction

Item No.	Part name	Material
01	Hose coupling	Cast iron
01a	Hose coupling	Cast iron
03	Terminal box	Cast iron
04	Wiring terminal	
05	Upper cover	Cast iron
06	Up-Bearing house	Cast iron
07	Bearing house	Cast iron
10	Seal bracket	Cast iron
11	Motor body	Cast iron
13	Pump body	Cast iron
14	Impeller	Ductile iron
17	Coupling adapter	Cast iron
22	Seat assembly	Cast iron
22a	Coupling seat	Cast iron
22b	Upper guide support	Cast iron
24	Neck ring	High chrome alloy
27	Stator	
28	Rotor	Shaft : AISI420SS
30	Flange	Cast iron
31a	Bearing	Ball bearing
31b	Bearing	Ball bearing
34	Mechanical seal	Sic-Sic
47	Cable	



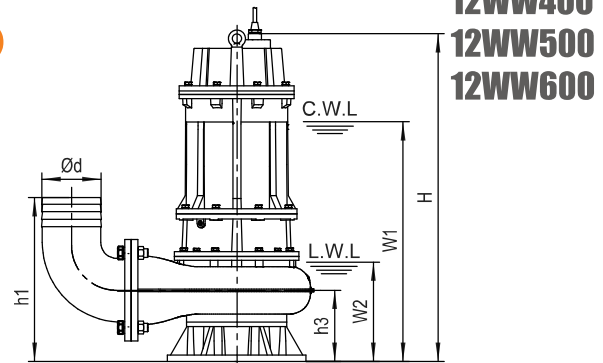
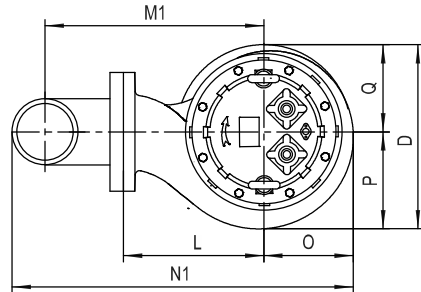
WW SERIES SEWAGE PUMP

12WW400
12WW500
12WW600



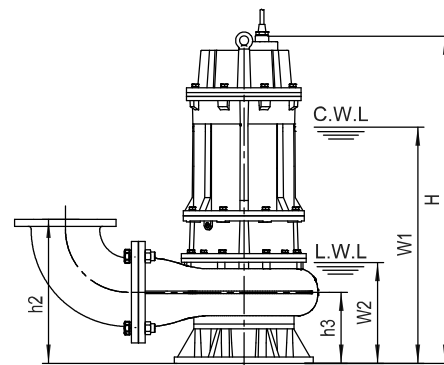
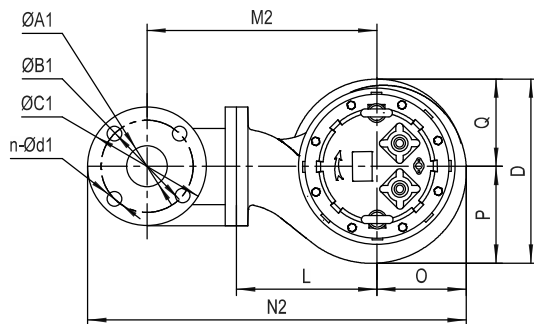
Model	Voltage	Current	Motor power		Outlet		Rated capacity	Rated head	Max capacity	Max Head	Impeller Passage
	50Hz/60Hz	V	A	kW	HP	in	mm	m³/h	m	m³/h	m
12WW400	230/460	98/49	30	40	12	300	800	8	1100	20	90
12WW500	230/460	118/59	37	50	12	300	800	11	1150	23	90
12WW600	230/460	143/71.5	45	60	12	300	800	14	1200	28	90

Movable Soft Pipe Installation (R)



12WW400
12WW500
12WW600

Movable Hard Pipe Installation (Y)



C.W.L : Continuous running water level
L.W.L : Lowest running water level

Dimensions table

Model	Ød	ØA1	ØB1	ØC1	n-Ød1	h1	h2	h3	W1	W2	H	O	P	Q	L	D	M1	M2	N1	N2
12WW400		300	400	445	12-Ø22	—	630	310	970	450	1315	340	386	290	480	676	—	803	—	1365
12WW500	12"	300	400	445	12-Ø22	—	630	310	960	450	1365	340	386	290	480	676	—	803	—	1365
12WW600	12"	300	400	445	12-Ø22	—	630	310	1000	450	1365	340	386	290	480	676	—	803	—	1365

※Standard equipment of 250, 300 mm outlet dimension does not include the bend hose coupling

Weights & Packing dimensions

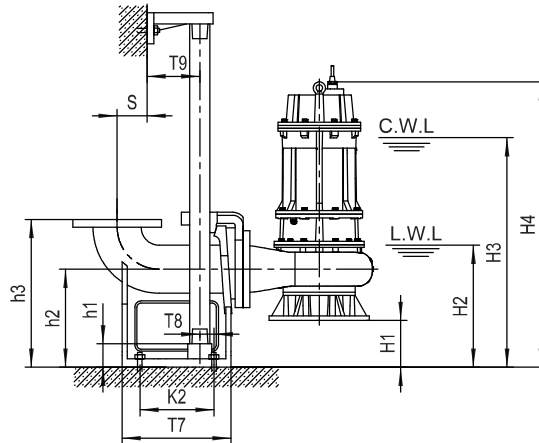
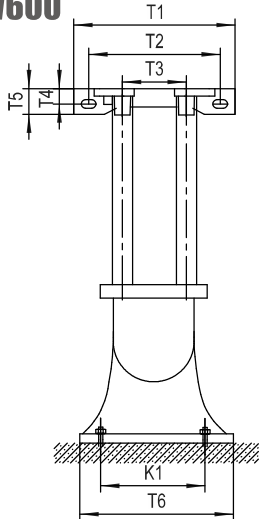
Model	R			Y		
	N.W	G.W	Packing dimension	N.W	G.W	Packing dimension
	kg	kg	mm	kg	kg	mm
12WW400	565	589	860×710×1490	610	634	860×710×1490
12WW500	622	646	860×710×1520	667	691	860×710×1520
12WW600	650	674	860×710×1520	695	719	860×710×1520



WW SERIES SEWAGE PUMP

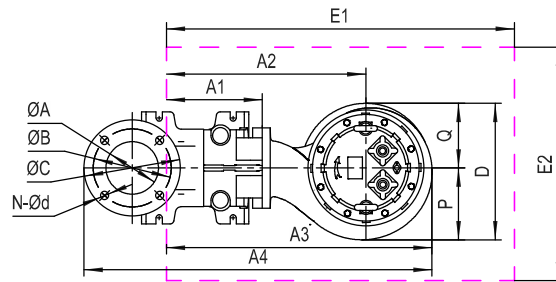
12WW400
12WW500
12WW600

Auto-Coupled Installation (Z)



C.W.L : Continuous running water level
 L.W.L : Lowest running water level

The coupling and pump will be packed individually, packing dimension and weight in table only refer to the pump, please refer to P48 to check coupling's packing dimension and weight.



Dimensions table

Auto coupling	ØA	ØB	ØC	N-Ød	T1	T2	T3	T4	T5	T6	T7	T8	T9	K1	K2	S	h1	h2	h3
12AC1	12"	400	445	12-Ø22	520	340	375	32	65	550	600	140	110	445	465	280	480	415	730

Dimensions table

Model	Auto coupling	H1	H2	H3	H4	A1	A2	A3	A4	P	Q	D	E1×E2	Pump weight & packing dimension		
														N.W	G.W	Packing dimension
12WW400	12"	105	555	1075	1420	380	860	1200	1700	386	290	676	1400×800	565	589	860×710×1490
12WW500	12"	105	555	1065	1470	380	860	1200	1700	386	290	676	1400×800	622	646	860×710×1520
12WW600	12"	105	555	1105	1470	380	860	1200	1700	386	290	676	1400×800	650	674	860×710×1520